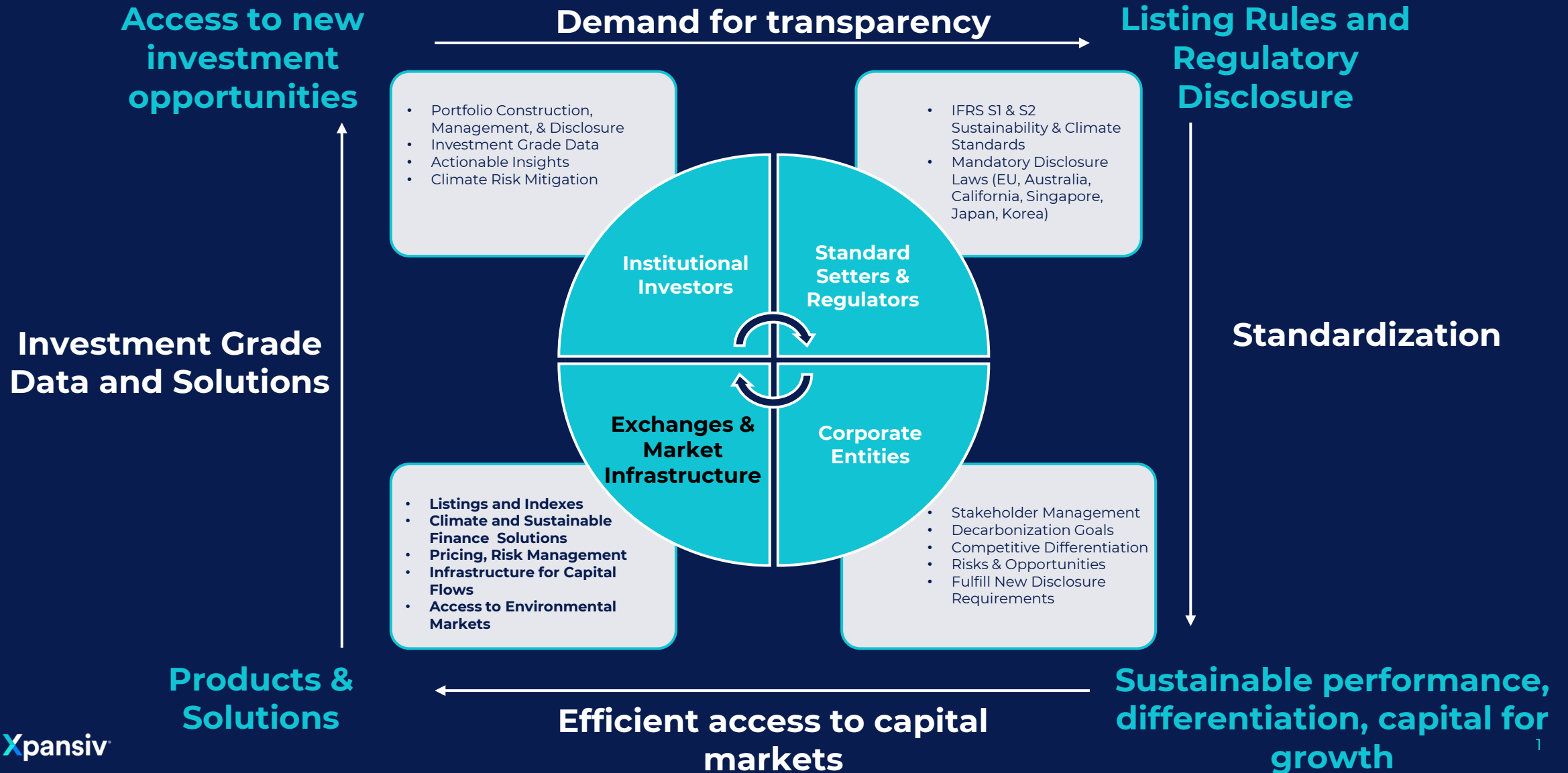
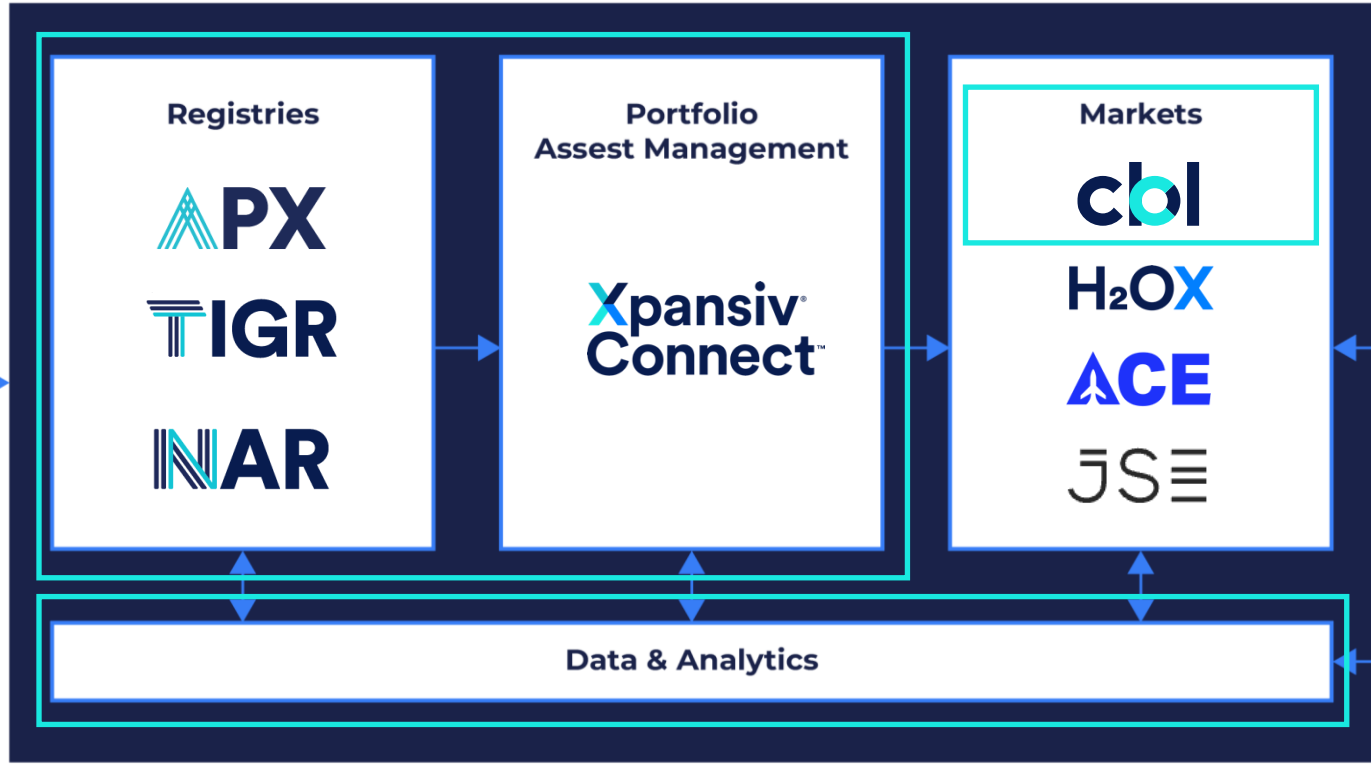


# An Evolving Ecosystem



# Xpansiv | Platform Architecture and Ecosystem



Xpansiv® Climate Report

# Xpansiv Climate Report

## (IFRS Aligned) Multi-jurisdictional Climate Disclosures

Xpansiv Climate Report draws information directly from Xpansiv Connect's portfolio management tool and connected registries, providing clients a 'source of truth' for enhanced disclosures on corporate climate strategies and decarbonization targets.

Covering RECs and carbon market transactions history, settlement, pricing, retirements, forward contracts, underlying project attributes, technological and nature-based removals, all verified against recognized international standards.

Meets the 'verifiable level' and external assurance needs of Boards, C-Suite, Chief Sustainability Officers, Legal, Finance, Risk, and Investor Relations functions.

- Efficient
- Cost effective
- Transparent
- Auditable
- Investment Grade



# Emissions Balance Ledger

Help

1 Scope 1  
Direct Emissions

2 Scope 2  
Purchased Energy Emissions

3 Scope 3  
Supply Chain Emissions

4 Summary Dashboard  
Review & Export

## Summary Emissions Dashboard

Download CSV

Scope 1 Offset



Scope 2 Offset

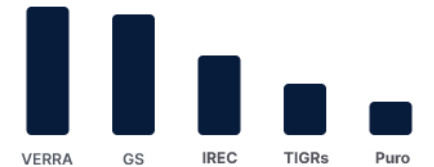


Scope 3 Offset



Retirements (YTD)

Top-5 registries by retirements this period.



### Scope 1 Summary



Total Gross Emissions	Emissions tCO <sub>2</sub> e	Total Net Emissions	Emissions tCO <sub>2</sub> e
Direct Emissions	4,900	Puro-Earth	4,000
Fugitive Emissions	100	ANREU	1,000
<b>Total Gross Scope 1</b>	<b>5,000</b>	<b>Total Scope 1 Offsets Retired</b>	<b>5,000</b>
% of Scope 1 Offset	100%	<b>Net Scope 1 Offsets Emissions</b>	<b>0</b>

Fully Offset (100%)

puro-earth PS-CORC ANREU

# Emissions Balance Ledger



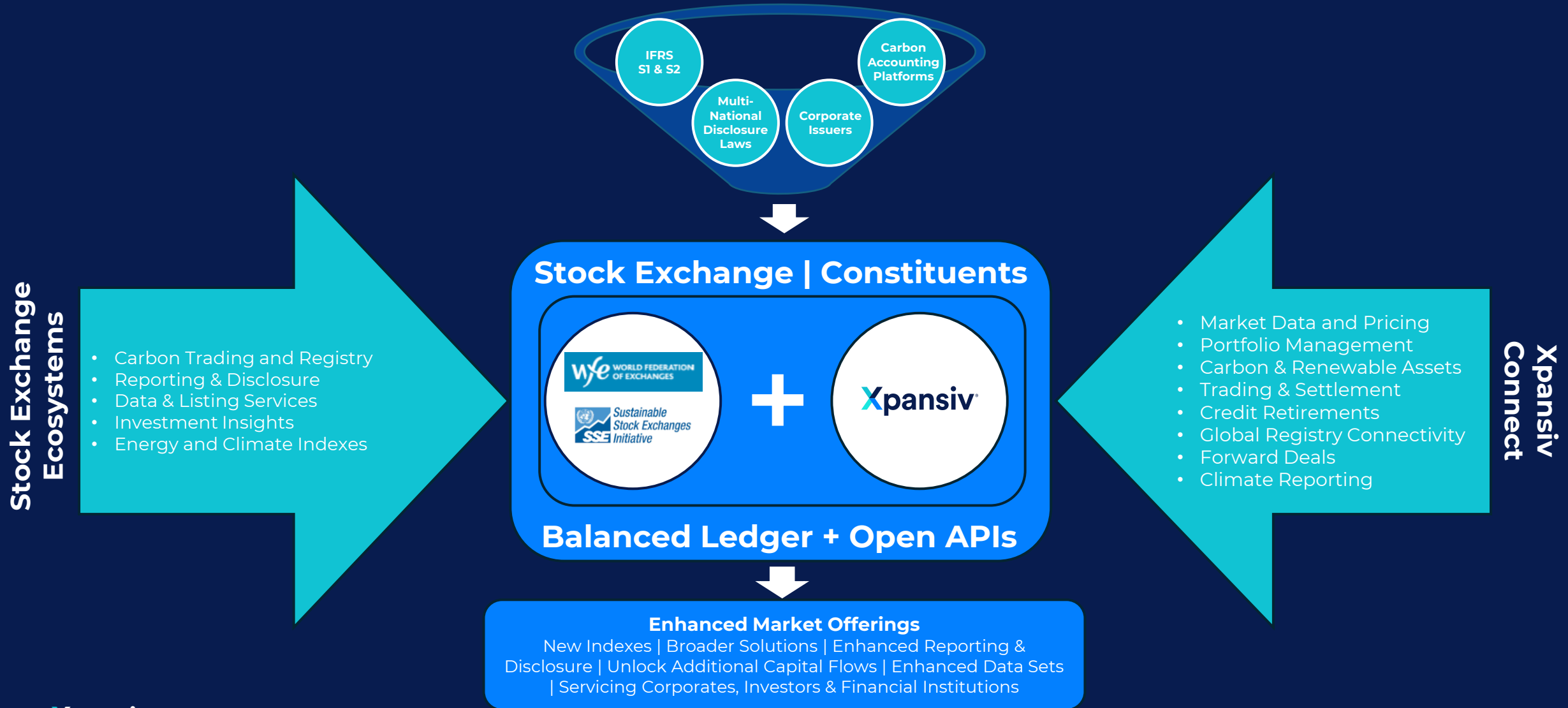
## Scope 2 Summary

Total Gross Emissions	Emissions tCO <sub>2</sub> e	Total Net Emissions	Emissions tCO <sub>2</sub> e
Location-Based Scope 2 Emissions (tCO <sub>2</sub> e)	40,000	TIGR (MWh)	10,000
Conversion to MWh...		IREC (MWh)	15,000
Converted Location-Based Emissions (MWh)	25,000	Total RECs Retired (MWh)	25,000
Market-Based Scope 2 Emissions (MWh)	0		
Converted Market-Based Emissions (tCO <sub>2</sub> e)	0		
<b>Total Gross Scope 2</b>	<b>40,000</b>		
% of Market-Based Scope 2 Offset	<div style="width: 100%;"><div style="width: 100%;"></div></div> 100%	<b>Net Scope 2 Emissions</b>	<b>0</b>
<input checked="" type="checkbox"/> Fully Offset (100%)		<input type="checkbox"/> IRECs <input type="checkbox"/> TIGR	

## Scope 3 Summary

Total Gross Emissions	Emissions tCO <sub>2</sub> e	Total Net Emissions	Emissions tCO <sub>2</sub> e
Upstream Emissions	55,500	Verra	56,742
Downstream Emissions	168,000	Gold Standard	50,000
<b>Total Gross Scope 3</b>	<b>223,500</b>	<b>Total Scope 3 Offsets Retired</b>	<b>106,742</b>
% of Scope 3 Offset	<div style="width: 48%;"><div style="width: 48%;"></div></div> 48%	<b>Net Scope 3 Emissions</b>	<b>116,758</b>

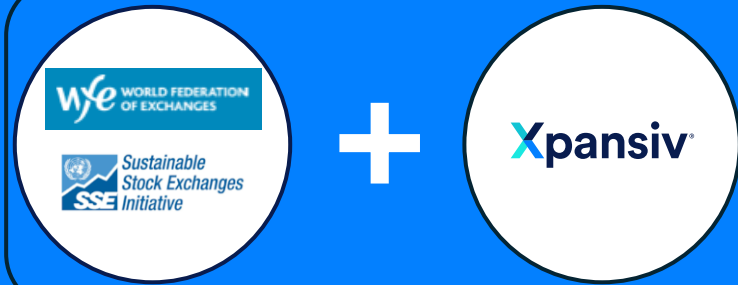
# Stock Exchanges & Xpansiv | Enhanced Market Infrastructure



Stock Exchange  
Ecosystems

- Carbon Trading and Registry
- Reporting & Disclosure
- Data & Listing Services
- Investment Insights
- Energy and Climate Indexes

## Stock Exchange | Constituents



## Balanced Ledger + Open APIs

### Enhanced Market Offerings

New Indexes | Broader Solutions | Enhanced Reporting & Disclosure | Unlock Additional Capital Flows | Enhanced Data Sets | Servicing Corporates, Investors & Financial Institutions

- Market Data and Pricing
- Portfolio Management
- Carbon & Renewable Assets
- Trading & Settlement
- Credit Retirements
- Global Registry Connectivity
- Forward Deals
- Climate Reporting

Xpansiv  
Connect